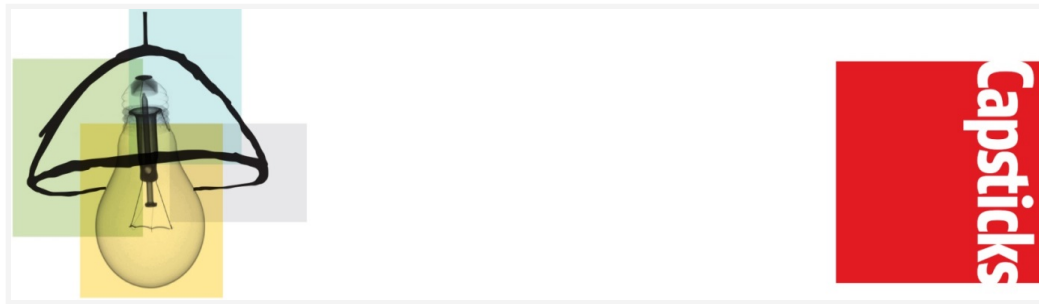




# Capsticks

🕒 Updated 22 Nov 2018

---



## Introduction

*“Capsticks is very pleased and proud to have been appointed to The Methodist Church’s Legal Services Framework for Managing Trustee Bodies and we look forward to working with you and supporting you in achieving your Mission.”*

*We are a national, full-service law firm with offices located in London, Birmingham, Leeds and Winchester. We are independently ranked by the leading legal directories (Legal 500 and Chambers) in the top tiers in our chosen fields.*

*We have extensive experience of advising charities including those linked to the Methodist Church, dealing with day to day legal issues right through to handling complex, sensitive projects. We understand the unique environment in which you are operating and this enables us to deliver practical and cost-effective legal support.”*

## How Capsticks can help Managing Trustees

As a member of the panel and preferred legal supplier, Local Churches, Circuits and Districts can have peace of mind that Capsticks have the necessary expertise and experience to advise Managing Trustees on the legal issues that will affect your charity.

Capsticks can advise you on:

- Property transactions - from manse sales and purchases to major redevelopments
- Charity law
- Employment law
- Litigation and safeguarding
- Ecumenical work
- Other specialist areas including trusts, data protection, reputational issues, schools, grants and fundraising

The firm provides a fully comprehensive service on every aspect of their legal requirements. While Capsticks do not provide advice on matters such as VAT or tax they have existing contacts and relationships with people who can provide this service for their clients. This ensures the firm provides a fully comprehensive service on every aspect of the legal requirements of their clients.

For further information on the legal services offered by Capsticks, Managing Trustees can visit their website at: [www.capsticks.com](http://www.capsticks.com) and/or by reading their brochure which can be found [here](#).

If Managing Trustees want to speak with someone directly about a legal issue or transaction then they can contact Sarah Skuse who is the Head of Methodist Church Legal Services on **020 8780 4652** or at [sarah.skuse@capsticks.com](mailto:sarah.skuse@capsticks.com)

## Offices and the Capsticks Team

Capsticks have a number of offices located in England and there are lawyers who can be contacted at each of the offices who will be familiar with the requirements of the Methodist Church. There are offices located in [Leeds](#), [London](#), [Birmingham](#), [Chorley](#) and [Winchester](#) and the contact details are listed below along with the names of the contacts at each office. In the first instance, however, please get in touch with Sarah Skuse who is the liaison officer with TMCP and the Connexional Team.

### Birmingham

35 Newhall Street,  
Birmingham B3 3PU

T +44 (0)121 230 1500  
F +44 (0)121 230 1515  
DX 13003 – Birmingham

### London

1 St George's Road,  
London SW19 4DR

T +44 (0)20 8780 2211  
F +44 (0)20 8780 1141  
DX 300118 – Wimbledon Central

### Chorley

Ordnance House,  
6 East Terrace Business Park,  
Euxton Lane,  
Chorley PR7 6TB

T +44 (0)125 726 6008  
F +44 (0)844 412 7557

### Leeds

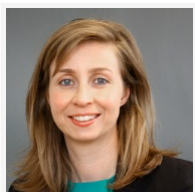
Toronto Square, Toronto Street,  
Leeds LS1 2HJ

T +44 (0)113 322 5560  
F +44 (0)113 242 2722  
DX 713112 – Leeds Park Square

### Winchester

Staple House, Staple Gardens, Winchester,  
Hampshire, SO23 8SR

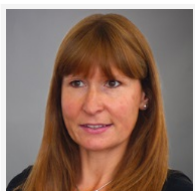
T +44 (0)1962 678 300  
F +44 (0)1962 678 311  
DX 2532 – Winchester



**SARAH SKUSE**  
**Head of Methodist Church Legal Services**  
London  
020 8780 4652  
[sarah.skuse@capsticks.com](mailto:sarah.skuse@capsticks.com)



**SAM HOPKINS**  
**Partner – Real Estate**  
London  
020 8780 4776  
[sam.hopkins@capsticks.com](mailto:sam.hopkins@capsticks.com)



**LISA GEARY**  
**Partner – Real Estate**  
Leeds  
0113 322 5561  
[lisa.geary@capsticks.com](mailto:lisa.geary@capsticks.com)



**HENRY MATVEIEFF**  
**Partner – Real Estate**  
Birmingham  
0121 262 6568  
[henry.matveieff@capsticks.com](mailto:henry.matveieff@capsticks.com)



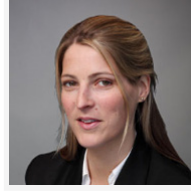
MIKE CLIFFORD  
**Partner – Commercial**  
Birmingham  
0121 230 1513  
[mike.clifford@capsticks.com](mailto:mike.clifford@capsticks.com)



VICTORIA WATSON  
**Partner – Employment**  
London  
020 8780 4775  
[victoria.watson@capsticks.com](mailto:victoria.watson@capsticks.com)



IAN COOPER  
**Partner – Civil litigation,  
Safeguarding & Reputation**  
Leeds  
0113 323 1060  
[ian.cooper@capsticks.com](mailto:ian.cooper@capsticks.com)



SUSIE ROGERS  
**Housing Development**  
Winchester  
020 8780 4929  
[susie.rogers@capsticks.com](mailto:susie.rogers@capsticks.com)

***If you have any queries in relation to the Panel of solicitors please contact [TMCP Legal](#) for further assistance.***

---

© 2019 TMCP  
Registered Charity No. 1136358  
A body corporate established by  
the Methodist Church Act 1939

Trustees For Methodist Church Purposes, Central Buildings  
Oldham Street, Manchester, M1 1JQ

Telephone: [0161 235 6770](tel:01612356770)  
Fax: [0161 236 0752](tel:01612360752)